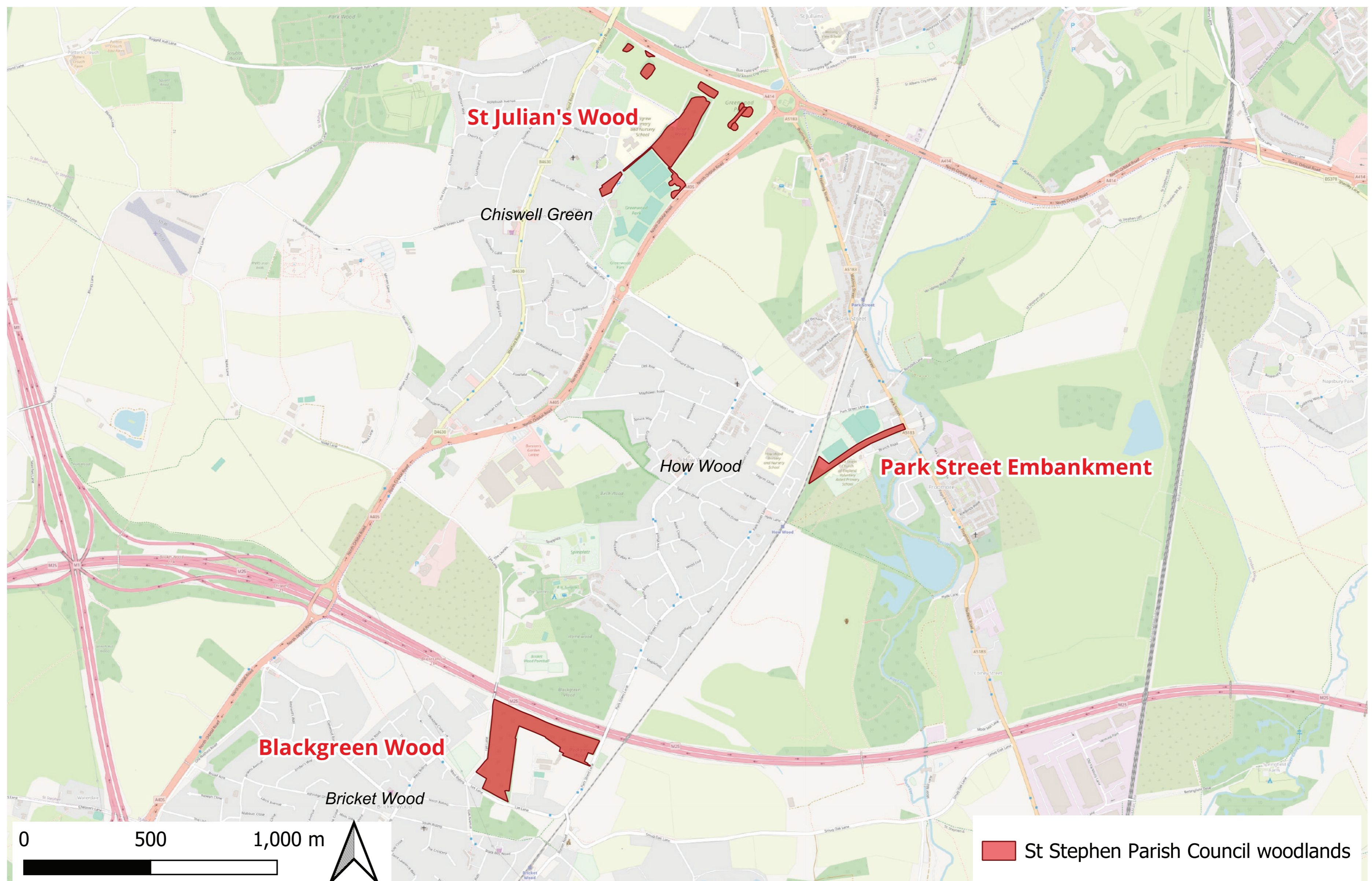
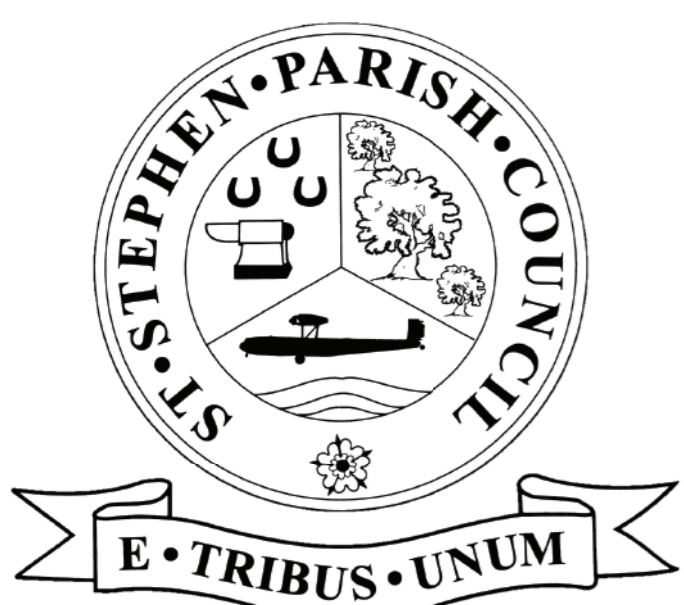


# Woodland Plan



St Stephen Parish Council is responsible for three woodlands in the Parish -St Julian's Wood in Greenwood Park, Black Green Wood in Bricket Wood and Park Street Embankment in Park Street Recreation Ground. Overall we manage a little over 8.7 hectares of woodland. The Council has recently commissioned a 10 year Woodland Management Plan.

**The plan is to help us conserve, manage and maintain our woodlands.**



To read our woodland plan visit [ststephen-pc.gov.uk](http://ststephen-pc.gov.uk) or click the code.



# Black Green Wood



6.2ha of Ancient Semi-Natural Woodland. Owned by the Parish Council since 2006. Designated Local Wildlife Site. Protected by a Tree Protection Order

Once part of a much more extensive woodland which covered hundreds of acres; it is now an important community greenspace surrounded by residential areas, roads and the M25 motorway.

## Management Plan

### Year 1:

- Focus on holly control in the densest areas. Retain some holly for barriers and monitor regrowth.

### Years 3, 5, 8, 10:

- Coppicing & thinning: Fell 0.3ha of coppice, thin overstorey, and protect coppice stools with brash baskets. Coppice and lay boundary trees.

### Ongoing:

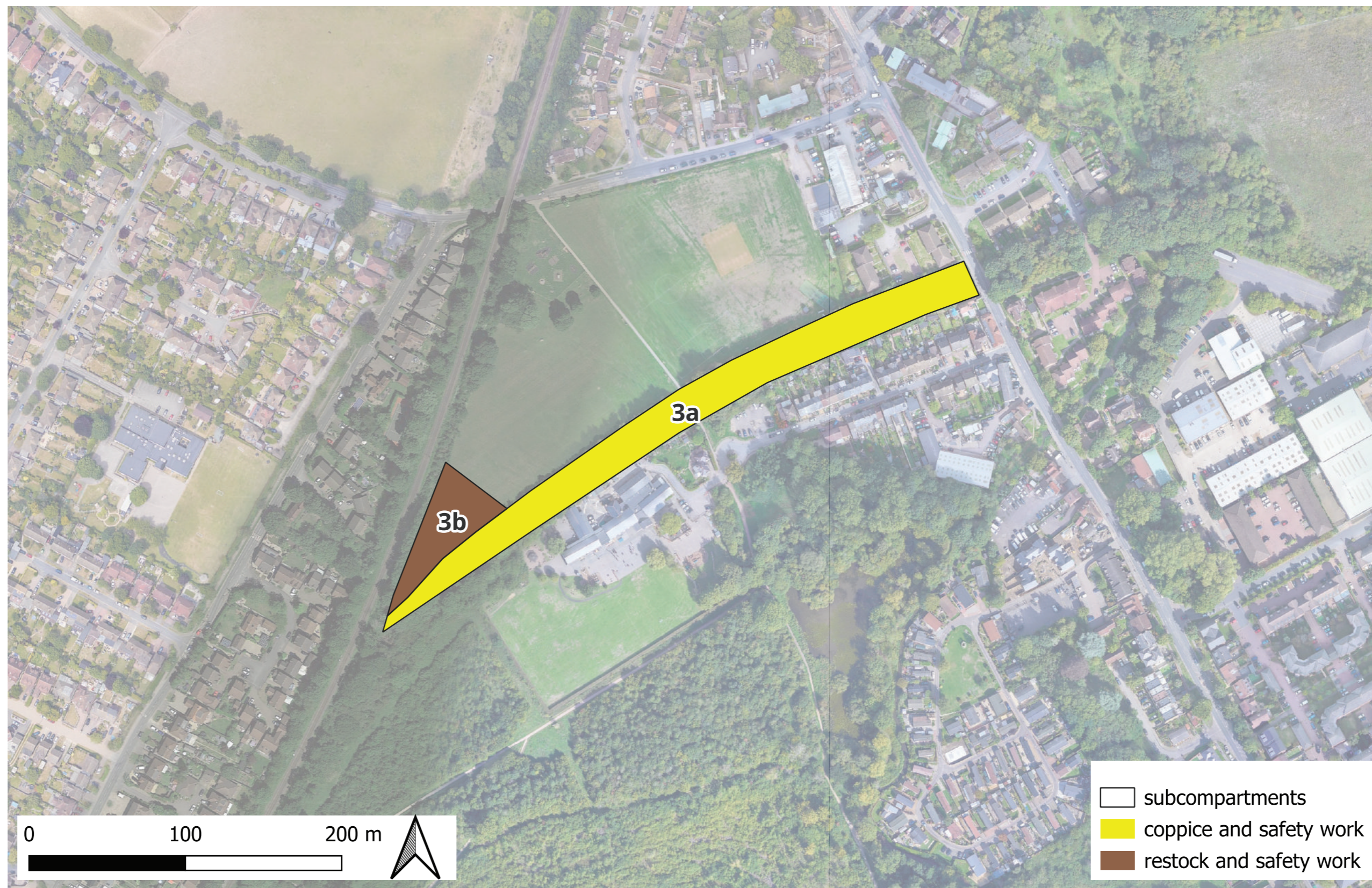
- Monitoring and Control
- Coppice Management
- Safety and Maintenance



To read our woodland plan visit [ststephen-pc.gov.uk](http://ststephen-pc.gov.uk) or click the code.



# Park Street Embankment



250m long embankment rising several meters above the surrounding area.  
Owned by St Albans City and District Council, managed by St Stephen  
Parish Council.

Located within Park Street and Frogmore Conservation Area.

**Originally used in the 1860s for transporting building materials during the construction of the Midland Main Line, the branch ceased operations between 1883 and 1898.**

## Management Plan

### Year 1 (compartment 3b):

- Carry out essential safety work and fell trees affected by ash dieback. Restock the felled area in 3b with site-suited native species. Local schools and the community will be participating in the replanting.

### Years 3, 6, 9 (compartment 3a):

- Coppice 10% of the hawthorn in each year. 30% overall. Monitor regrowth and adapt strategy accordingly, retain most other species (yew, oak, etc.) for diversity.
- Enrich by planting site-suited species for diversity and landscape (field maple, wild cherry, crab apple, etc.)

### Ongoing:

- Monitoring and Control
- Safety and Maintenance



To read our woodland plan  
visit [ststephen-pc.gov.uk](http://ststephen-pc.gov.uk) or  
click the code.



# St Julian's Wood



2.5ha ancient semi-natural woodland and spinneys within Greenwood Park.  
Designated Local Wildlife Site.

**St Julian's wood is rich in natural and historical features including wood banks, an ancient holloway, veteran trees, a marl pit and old coppice stool. In spring the wood is carpeted with bluebells.**



## Management Plan

### Year 2 :

- 2a Fell 0.5ha of coppice and thin/ fell the overstorey over the coppiced area, to bring more light on the coppice stools. Retain a few coppice stems. Build brash baskets to protect coppice stools. Lightly thin the rest of the compartment, coppice and lay boundary trees along the coppiced area. 2c Coppice and pollard the hedgerow.

### Year 4 (compartments 2b.1 to 2b7):

- Thin and coppice to open the overstorey, cut most coppiceable species to diversify the woodland structure. If possible, build brash baskets to protect the coppice stools.

### Ecotones:

- Let ecotones develop at the edges of the woodlands.

### Ongoing:

Monitoring and Control  
Coppice Management  
Safety and Maintenance

To read our woodland plan  
visit [ststephen-pc.gov.uk](http://ststephen-pc.gov.uk) or  
click the code.

